

The Center for Supply Chain Management and Logistics

University of Illinois at Chicago
Summer 2008, Newsletter



Internship Panel

On April 23rd, the Center for Supply Chain Management and Logistics hosted a successful internship panel for students in the College of Engineering, College of Business and College of Urban Planning in the Student Center. The panel aimed at giving students an opportunity to hear from each of the different organizations present. Afterwards, there was a break period, where students were able to network with the panelists. In all 50, UIC students attended the event and stayed afterwards to participate in networking activities.

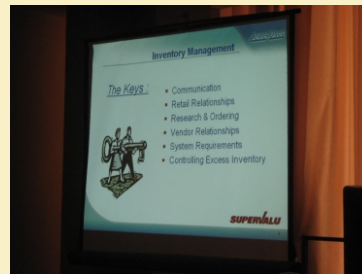
The companies and organizations present included:

- Target Corporation** (Store Mgmt and Logistics)
- Caterpillar** (Logistics and Supply Chain Management)
- American Transport LLC** (Transportation and Logistics)
- CMAP** ~ Chicago Metropolitan Agency for Planning
- NAI Hiffman Global** (Supply Chain Management)
- Jewel Osco** (Logistics)

Target Corporation spoke about their high need for Store Executive-Lead positions (looking for qualified UG business or MBA students) and Logistics analysts for various store needs. Caterpillar's speakers Heather and Rick talked about their company that began over 80 years ago, noting what kind of positions they seek qualified students for. After the presentation, they both mentioned how important Engineering and Logistics is to their business mainframe. CAT looks forward to working with the Supply Chain center in the future as they continue to pursue UIC candidates for entry level rotational program positions (Engineering, Supply Chain Management and Logistics).

American Transport Group, LLC spoke next. Lauren Russell, HR Director, mentioned that American Transport Group has grown at a face pace since she started with the company 8 years ago. ATG provides

multi-modal third-party transportation solutions. Their logistics consultants, aided by some of the most sophisticated technology within the transportation industry, facilitate freight transfers throughout the continental United States, Canada and Mexico. ATG's primary customers are shippers, consignees and carriers.



CONTACT US

For additional information or to become a partner of The Center for Supply Chain Management and Logistics, please contact Center Director, Dr. Anthony M. Pagano at 312. 996.8063
Or visit us on the web: <http://www.supply-chain.uic.edu/>

Address: University Hall - 601 S Morgan Street - Chicago IL 60607

Internship Panel (cont.)

CMAP's speaker Bola Delano gave the students a slightly different perspective. She talked about how CMAP is working on environmentally sustainable urban planning development in Chicago-land. CMAP is now developing the region's first truly comprehensive plan for land use and transportation. The agency has committees at the policy, advisory, coordinating, and working levels that play integral roles in these planning processes. CMAP has recruited UIC students from CUPPA in the past for summer internship positions.

NAI Hiffman's David Troha spoke about NAI's strategic position in the freight community. NAI Hiffman is the largest full-service, privately owned real estate services firm in the Midwest. They have served the Chicago area since 1981 and house over 3500 brokers. While NAI wasn't seeking any internship candidates at the time of the panel, students were able to ask him about the company and potential career opportunities there.

Lastly, John Yasak from Jewel Osco (Supervalu) spoke about an internship opportunity in Logistics. He gave a power point presentation (as CAT and NAI Hiffman before him) regarding supply chain flow at Jewel. Interesting, he noted, 'our food travels an average of 3000 miles before it reaches our local grocery store.' Logistically speaking, that should be a nightmare to organize. At Jewel, they have it down to a science, according to John. If a Jewel store manager orders out of stock items at 9am one day, the food he/she ordered is at the store by that same afternoon/evening. Therefore, logistics play a crucial role here and Jewel is seeking UIC candidates who are interested in pursuing that career track.

Overall, the panel was a great success for our center. It moved us one step closer at getting local businesses involved with informing our students about potential career opportunities and internship positions at their corporations. We are planning to host another internship panel in the Fall 2008. We hope that you are able to attend!

UIC Center for Supply Chain Mgmt Information

The Center seeks to develop cutting edge solutions to emerging problems associated with global supply chains. Uniquely positioned in the city of Chicago, the third largest freight hub in the world, the Center specifically addresses manufacturing, transportation, and logistics management issues in an effort to reduce cost and improve the efficiency of supply chains.

Supply Chain Center Faculty Highlights



This week we are profiling **Houshang Darabi**, Associate Director of the Center for Supply Chain Management & Logistics. Professor Darabi is currently an Associate Professor with the Department of Mechanical and Industrial Engineering, University of Illinois at Chicago. Houshang received his Ph.D. Degree in Industrial and Systems Engineering from Rutgers University, New Brunswick, NJ in 2000. His research interests include the application of discrete-event systems, control theory in modeling and analysis of service and manufacturing systems, computer-integrated manufacturing, supply chain networks, and manufacturing information systems. His research has been supported by the National Science Foundation, the Department of Commerce, Motorola Inc., And several other agencies. He has published in different prestigious journals and has presented his research in national and international conferences. Houshang is a senior member of the Institute of Industrial Engineers (IEE), a member of the Institute of Electrical and Electronics Engineers (IEEE), and the Institute for Operations Research and the Management Sciences (INFORMS).

Expertise

Supply chain networks, Radio Frequency and Identification (RFID) systems, health care resource management of mass casualty events, real time monitoring and control of agent based supply chain systems, supervisory control and data acquisition systems, and programmable logic controllers.

In the Works!!

2008 Internship/Career Fair - November 5th: Cardinal Room ~ SCE 3rd Floor

8-10 different supply chain companies present their business organizations as well as internship opportunities they are currently recruiting for. If you and your organization are interested in participating in this panel, please contact the Supply Chain Center at UIC: **312. 996.8063**

It is an excellent opportunity to recruit UIC students for your business needs!

Questionnaire!

The Center will be sending out a **Questionnaire** directed towards Chicagoland and Illinois companies and organizations involved in Supply Chain Management and Logistics. Please take a moment to provide us with some valuable information regarding how we can better service the supply chain management community. We appreciate it!

CONTACT US

For additional information or to become a partner of The Center for Supply Chain Management and Logistics, please contact Center Director, Dr. Anthony M. Pagano at 312. 996.8063. Or visit us on the web: <http://www.supply-chain.uic.edu/>

Address: University Hall - 601 S Morgan Street - Chicago, IL 60607